
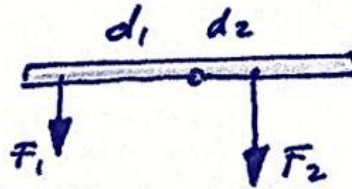


Zwaartepunt Z: van alle massa geconcentreerd ligt

Moment $M \stackrel{\text{def}}{=} \vec{F} \cdot d$



* evenwicht als:
 $\begin{cases} \sum \vec{F} = \vec{0} \\ \sum M = M \end{cases}$



$$F_1 \cdot d_1 = F_2 \cdot d_2$$

* vervorming

$$C \stackrel{\text{def}}{=} F / \Delta l$$

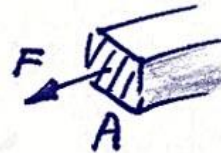
$$\sigma \stackrel{\text{def}}{=} F / A$$

$$\epsilon \stackrel{\text{def}}{=} \Delta l / l_0$$

$$E \stackrel{\text{def}}{=} \sigma / \epsilon$$

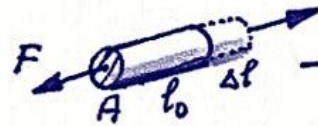
constante bij eenveer N/m

spanning (stress)



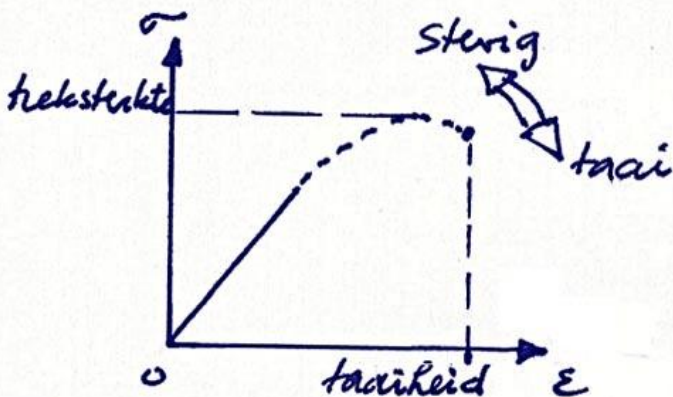
Pa

rek (strain)



(%)

elasticiteitsmodulus; Pa
 helling in (σ, ϵ) -grafiek



BINAS 8 9 10